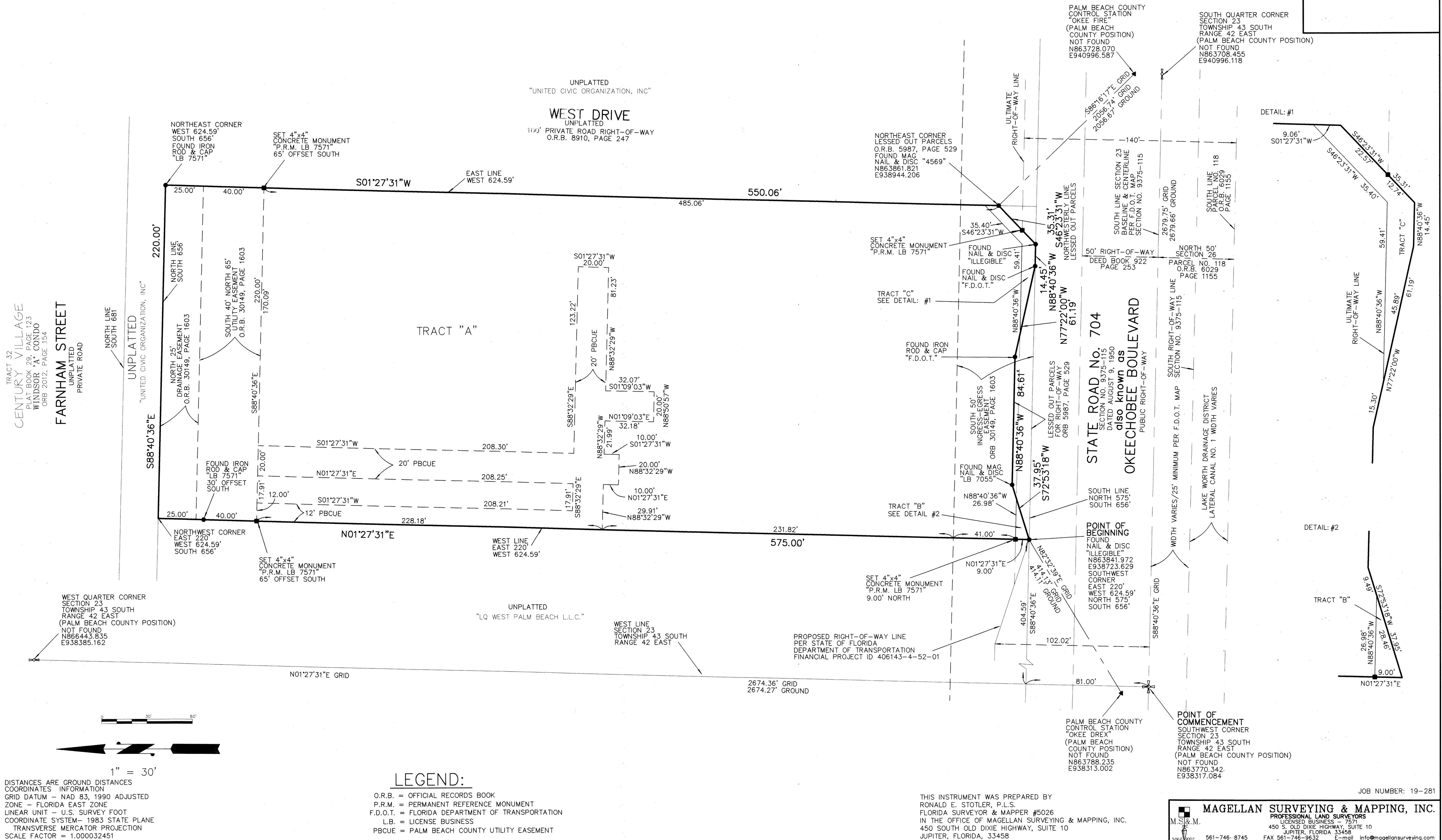


# MEDICAL OFFICES FOR FOUND CARE

BEING A PARCEL OF LAND  
 LYING IN THE SOUTHWEST QUARTER OF  
 SECTION 23, TOWNSHIP 43 SOUTH, RANGE 42 EAST  
 PALM BEACH COUNTY, FLORIDA

PAGE 2 OF 2

93



1" = 30'  
 DISTANCES ARE GROUND DISTANCES  
 COORDINATES INFORMATION  
 GRID DATUM - NAD 83, 1990 ADJUSTED  
 ZONE - FLORIDA EAST ZONE  
 LINEAR UNIT - U.S. SURVEY FOOT  
 COORDINATE SYSTEM - 1983 STATE PLANE  
 TRANSVERSE MERCATOR PROJECTION  
 SCALE FACTOR = 1.000032451

**LEGEND:**  
 O.R.B. = OFFICIAL RECORDS BOOK  
 P.R.M. = PERMANENT REFERENCE MONUMENT  
 F.D.O.T. = FLORIDA DEPARTMENT OF TRANSPORTATION  
 L.B. = LICENSE BUSINESS  
 PBCUE = PALM BEACH COUNTY UTILITY EASEMENT

THIS INSTRUMENT WAS PREPARED BY  
 RONALD E. STOTLER, P.L.S.  
 FLORIDA SURVEYOR & MAPPER #5026  
 IN THE OFFICE OF MAGELLAN SURVEYING & MAPPING, INC.  
 450 SOUTH OLD DIXIE HIGHWAY, SUITE 10  
 JUPITER, FLORIDA, 33458

**MAGELLAN SURVEYING & MAPPING, INC.**  
 PROFESSIONAL LAND SURVEYORS  
 LICENSED BUSINESS 1-757  
 450 S. OLD DIXIE HIGHWAY, SUITE 10  
 JUPITER, FLORIDA 33458  
 561-746-8745 FAX 561-746-9632 E-mail info@magellansurveying.com

JOB NUMBER: 19-281